

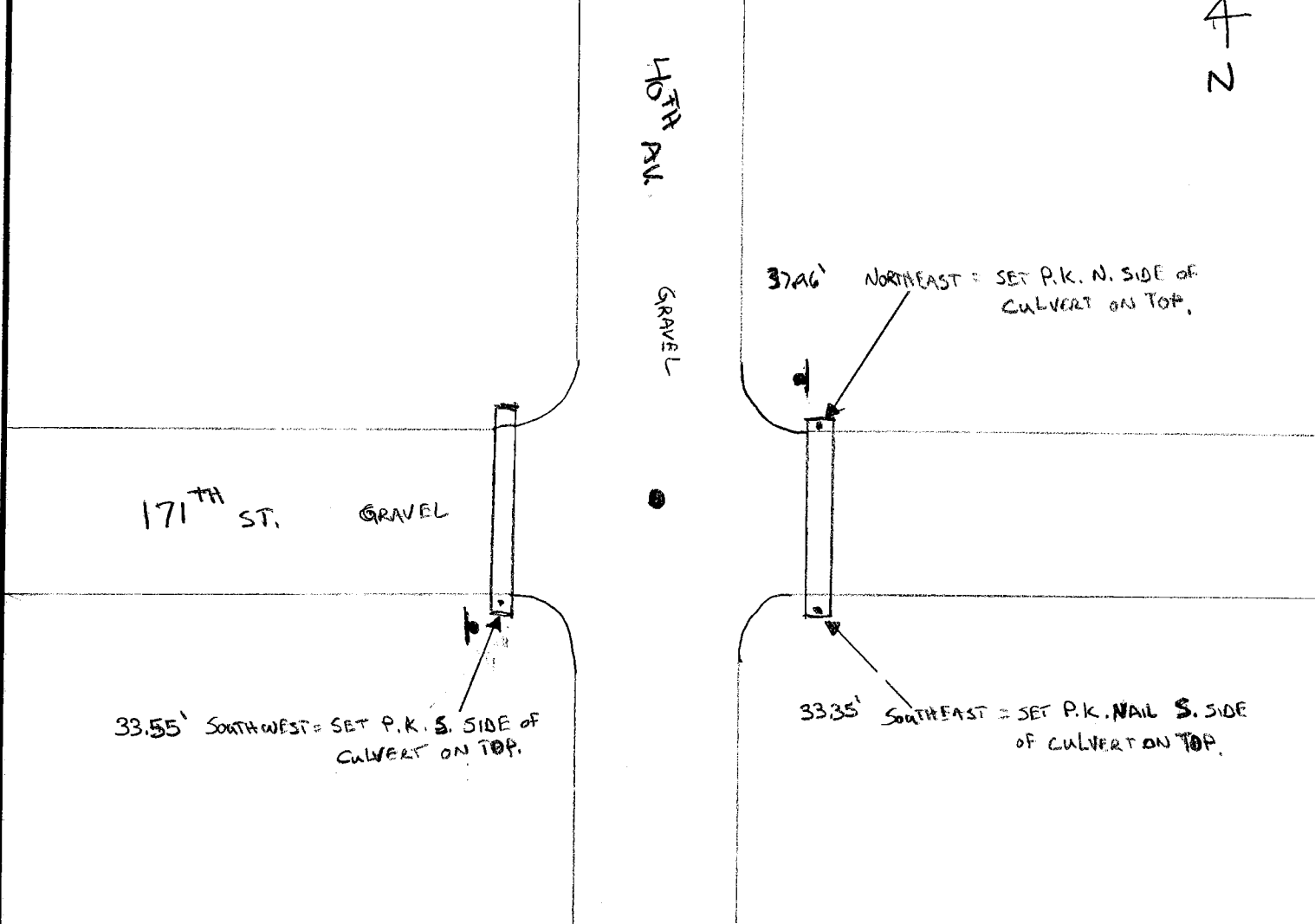
# CERTIFICATE OF LOCATION OF GOVERNMENT CORNER

Northeast Corner of Section 10, Township 107 N, Range 43 W, 5<sup>th</sup> P.M.  
 STATE OF MINNESOTA, County of Murray

At the corner location shown on the sketch:

- On 6/27/07 found a CAPPED IRON PIPE Down 0.2' Below Surface  
DATE CAP # 43844
- left monument as found,    
  lowered monument,    
  removed monument (explain)
- On \_\_\_\_\_ placed a \_\_\_\_\_  
DATE

### SKETCH OF REFERENCE TIES



Statement of evidence relative to this corner location is on back of page.

I hereby certify that this document and the data contained herein was prepared by me or under my direct supervision.

[Signature]

SIGNATURE

Registration No. 40853

- Land Surveyor,    
  Professional Engineer  
 County Surveyor,    
  County Engineer

OFFICE OF THE COUNTY RECORDER  
 County of \_\_\_\_\_

I hereby certify that this document was filed in the Co. Recorders office at \_\_\_\_\_ M. on the \_\_\_\_\_ day of \_\_\_\_\_ A.D., 20\_\_\_\_

County Recorder \_\_\_\_\_  
 By \_\_\_\_\_, Deputy  
 DOCUMENT NO. \_\_\_\_\_